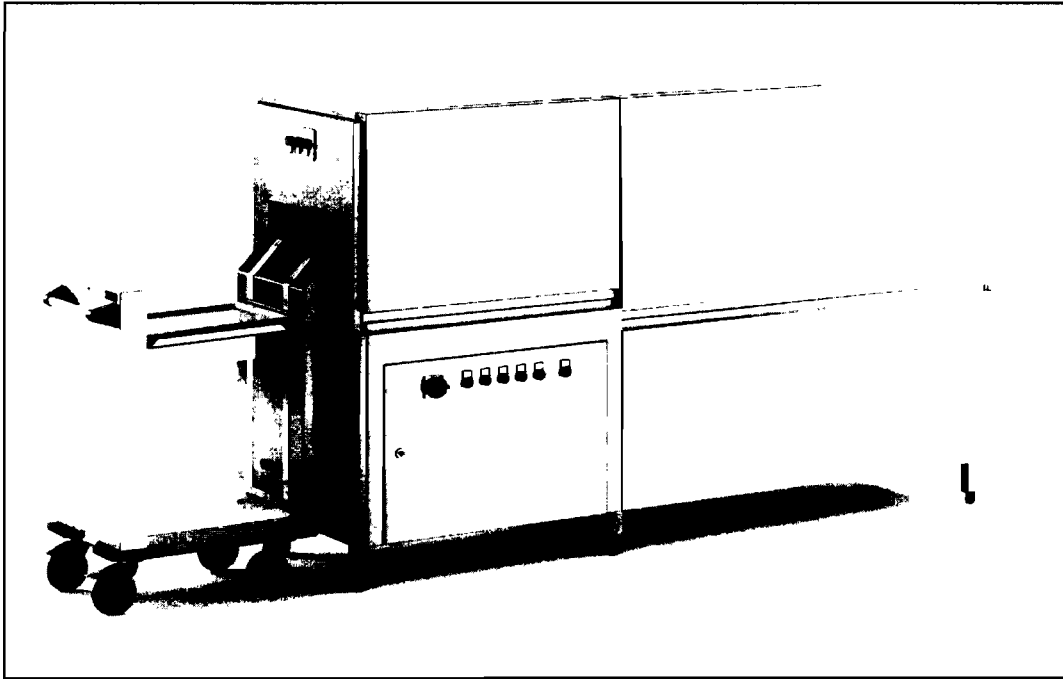


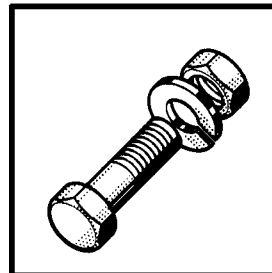
HOBART



FTT

Right / Left
Droite / Gauche
Rechts / Links

Spare Parts
Pièces Détachées
Ersatzteile



Contents

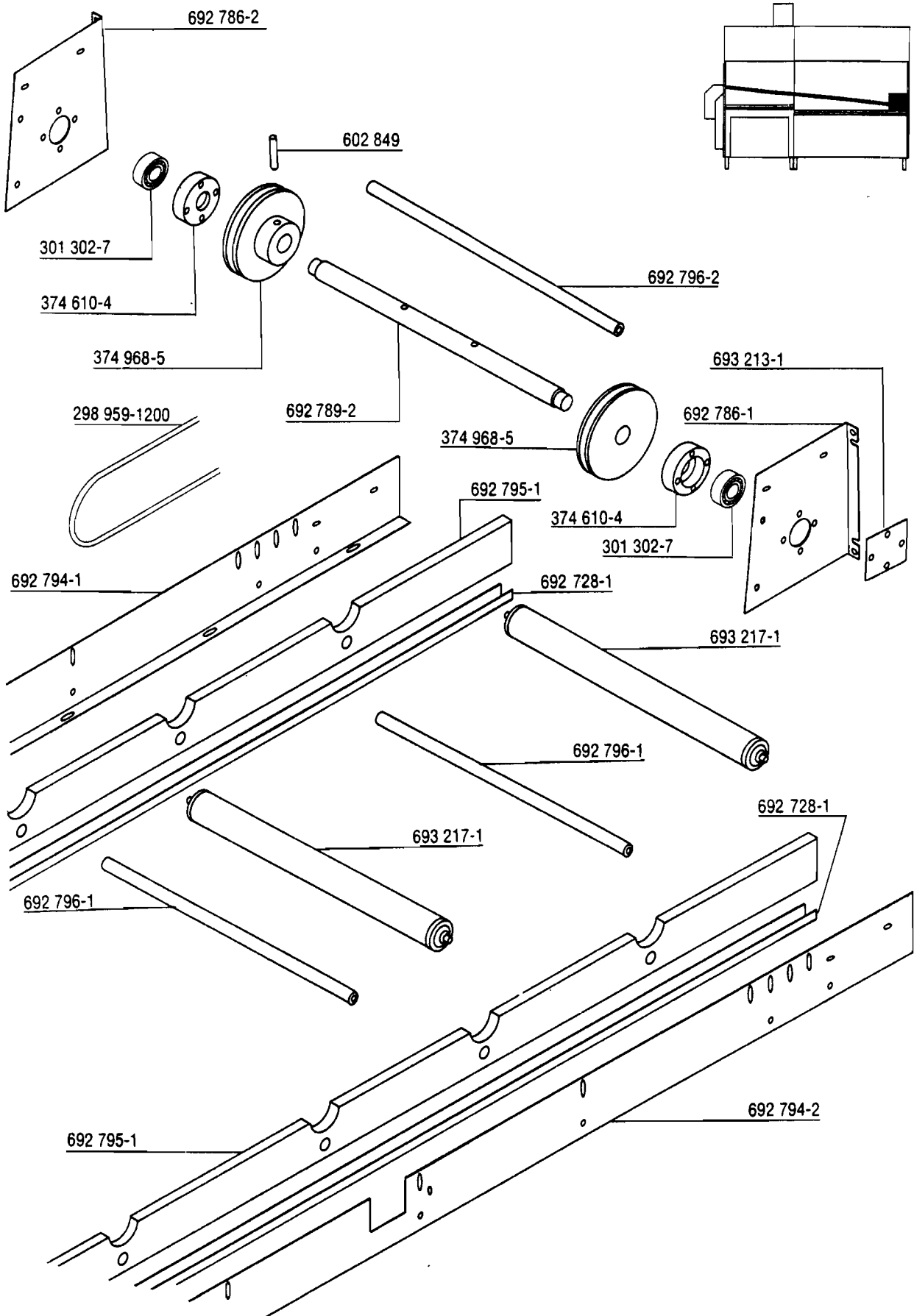
| | |
|---|----|
| Transport system Page 1 | 3 |
| Transport system Page 2 | 4 |
| Wash module 1400 | 5 |
| Strainers + Drains | 6 |
| Tank heating + Float switch | 7 |
| Wash system | 8 |
| Blower + Rinse | 9 |
| Booster el. heated | 10 |
| Booster 0,5m ² hot water + Steam | 11 |
| Tankheating hot water + Steam | 12 |
| Panels + Insulation wash module 1400 | 13 |
| Dryer module 850 | 14 |
| Panels + Insulation dryer module 850 | 15 |
| Condenser | 16 |
| Exhaust extracion - Fan | 17 |
| Tray Stacker | 18 |
| Tray stacker with buffer stacker | 19 |

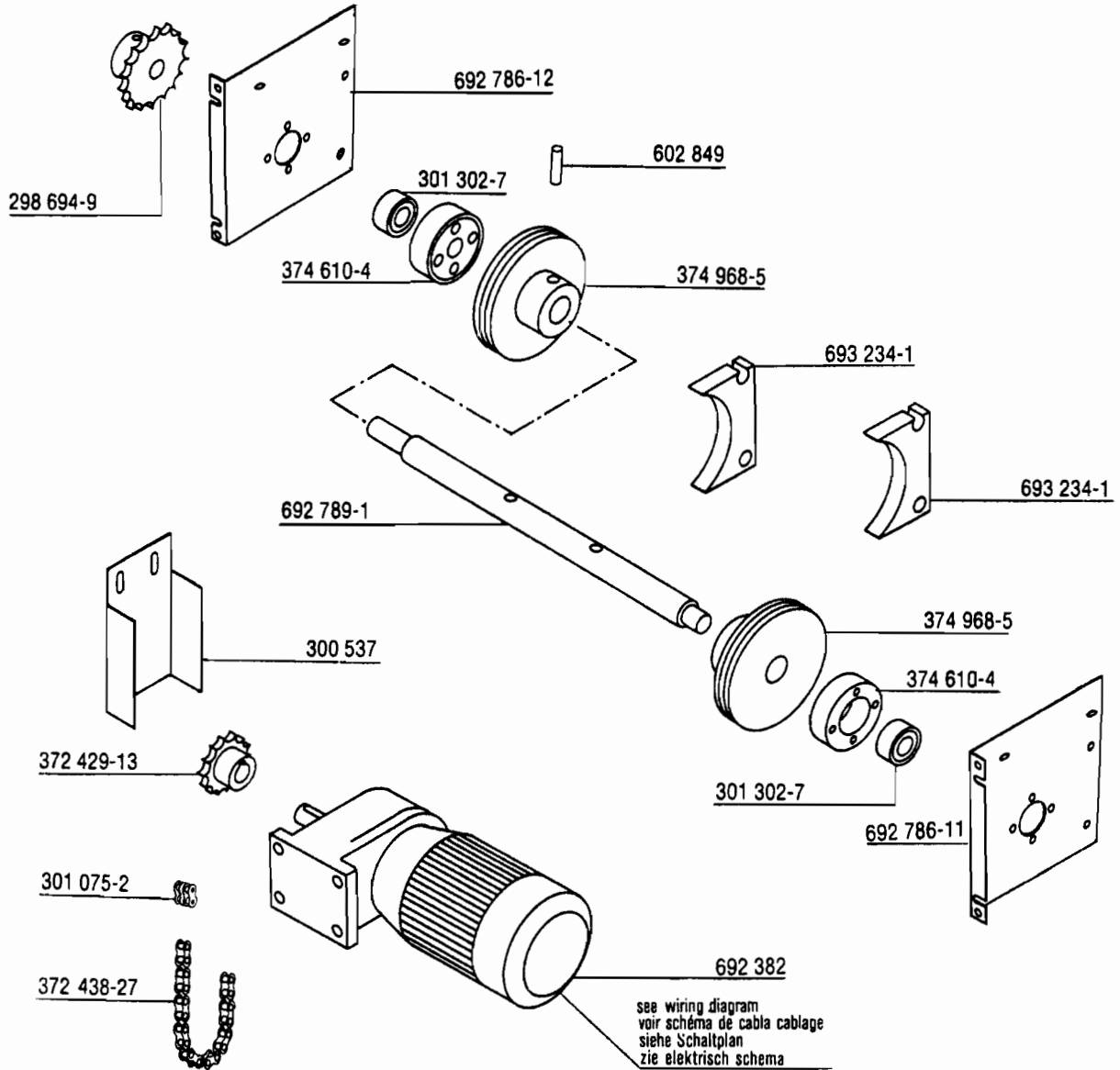
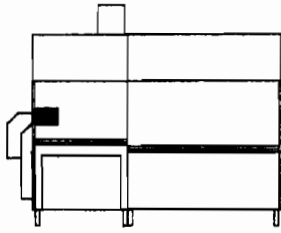
Sommaire

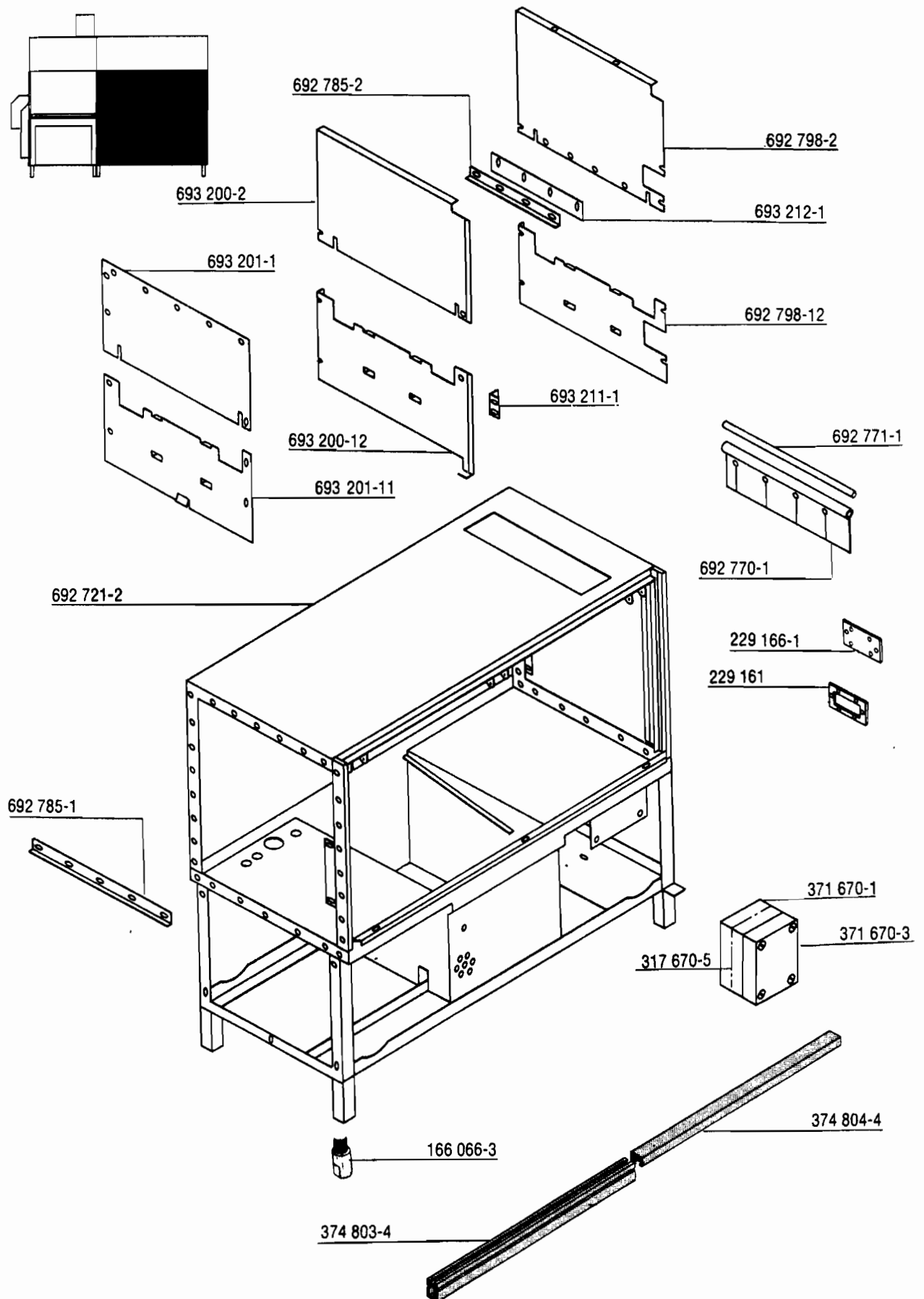
| | |
|---|----|
| Systeme de transport Page 1 | 3 |
| Systeme de transport Page 2 | 4 |
| Module de levage 1400 | 5 |
| Filtres + Vidange | 6 |
| Chauffage du bac + Interrupteur à flotteur | 7 |
| Systeme de lavage | 8 |
| Pre-soufflage + Rincage | 9 |
| Chaudière électrique | 10 |
| Chaudière 0,5m ² eau chaude + Vapeur | 11 |
| Chaudière du bac eau chaud + Vapeur | 12 |
| Habillage + Isolation module de lavage 1400 | 13 |
| Module de sechage 850 | 14 |
| Habillage + Isolation module de sechage 850 ... | 15 |
| Condenseur | 16 |
| Extraction des buées - Ventilateur | 17 |
| D'extraction system des plateaux | 18 |
| Empilage de plateaux (final et intermédiaire) | 19 |

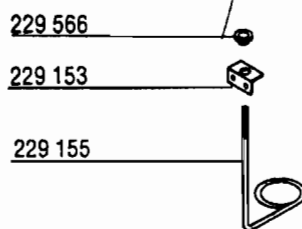
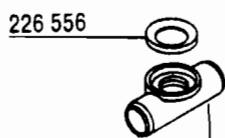
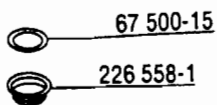
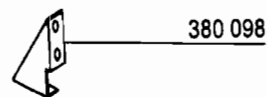
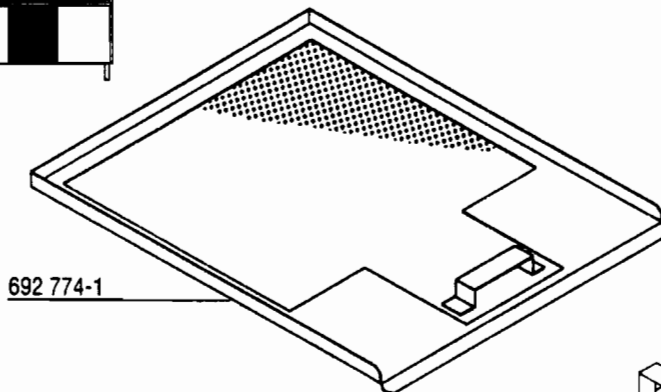
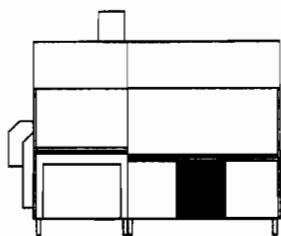
Inhalt

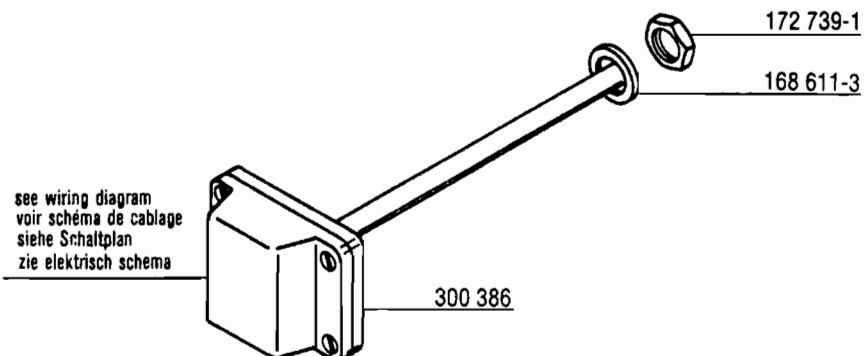
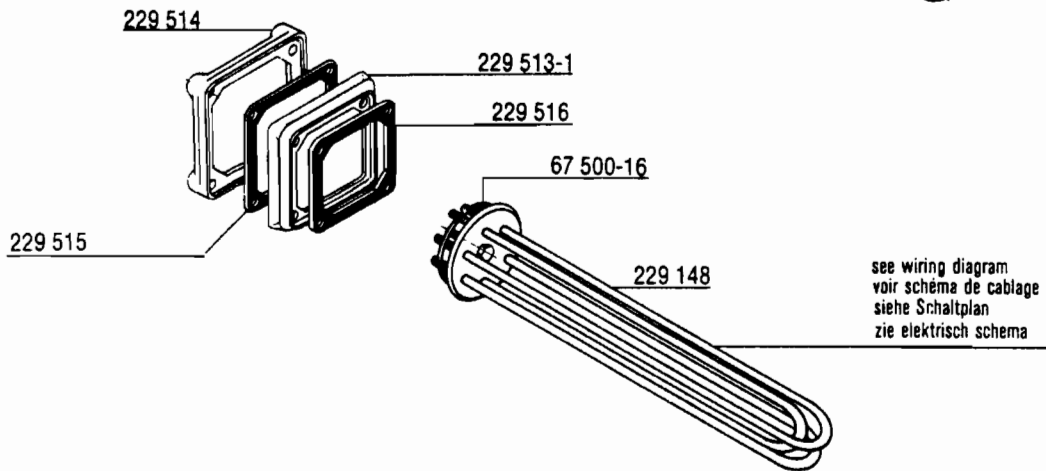
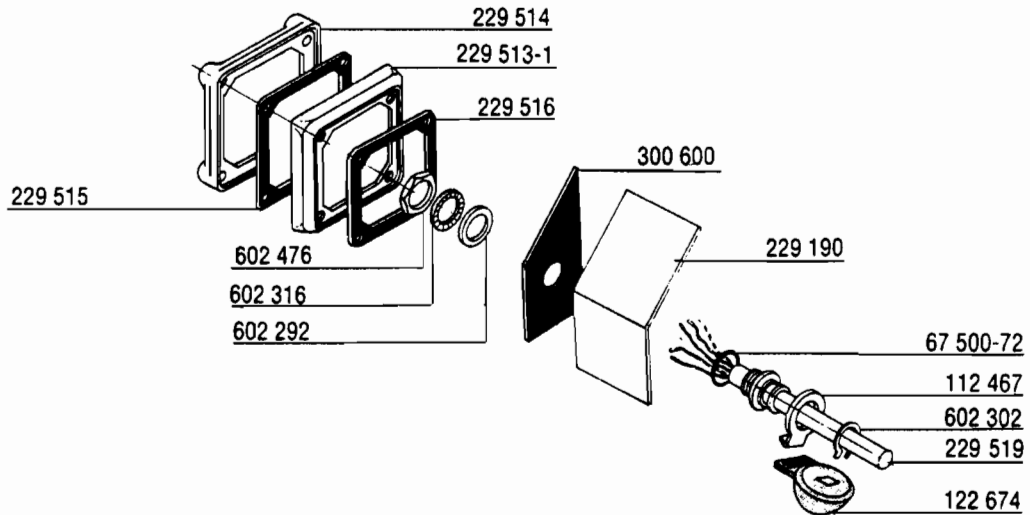
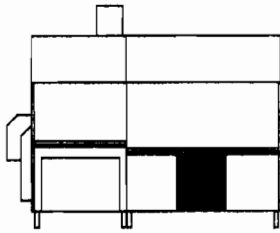
| | |
|--|----|
| Transportsystem Blatt 1 | 3 |
| Transportsystem Blatt 2 | 4 |
| Waschmodul 1400 | 5 |
| Sieb + Ablauf | 6 |
| Tankheizung + Schwimmer-Schalter | 7 |
| Waschsystem | 8 |
| Vorausblasung + Spülung | 9 |
| Durchlauferhitzer el. beheizt | 10 |
| Durchlauferhitzer 0,5m ² HW + Dampf | 11 |
| Tankheizung HW + Dampf | 12 |
| Verkleidungen + Isolation Waschmodul 1400 | 13 |
| Trockenmodul 850 | 14 |
| Verkleidungen + Isolation Trockenmodul 850 | 15 |
| Kondensator | 16 |
| Wrasenabzug - Ventilator | 17 |
| Abstapelung | 18 |
| Abstapelung mit Zwischenstapel-Einrichtung | 19 |

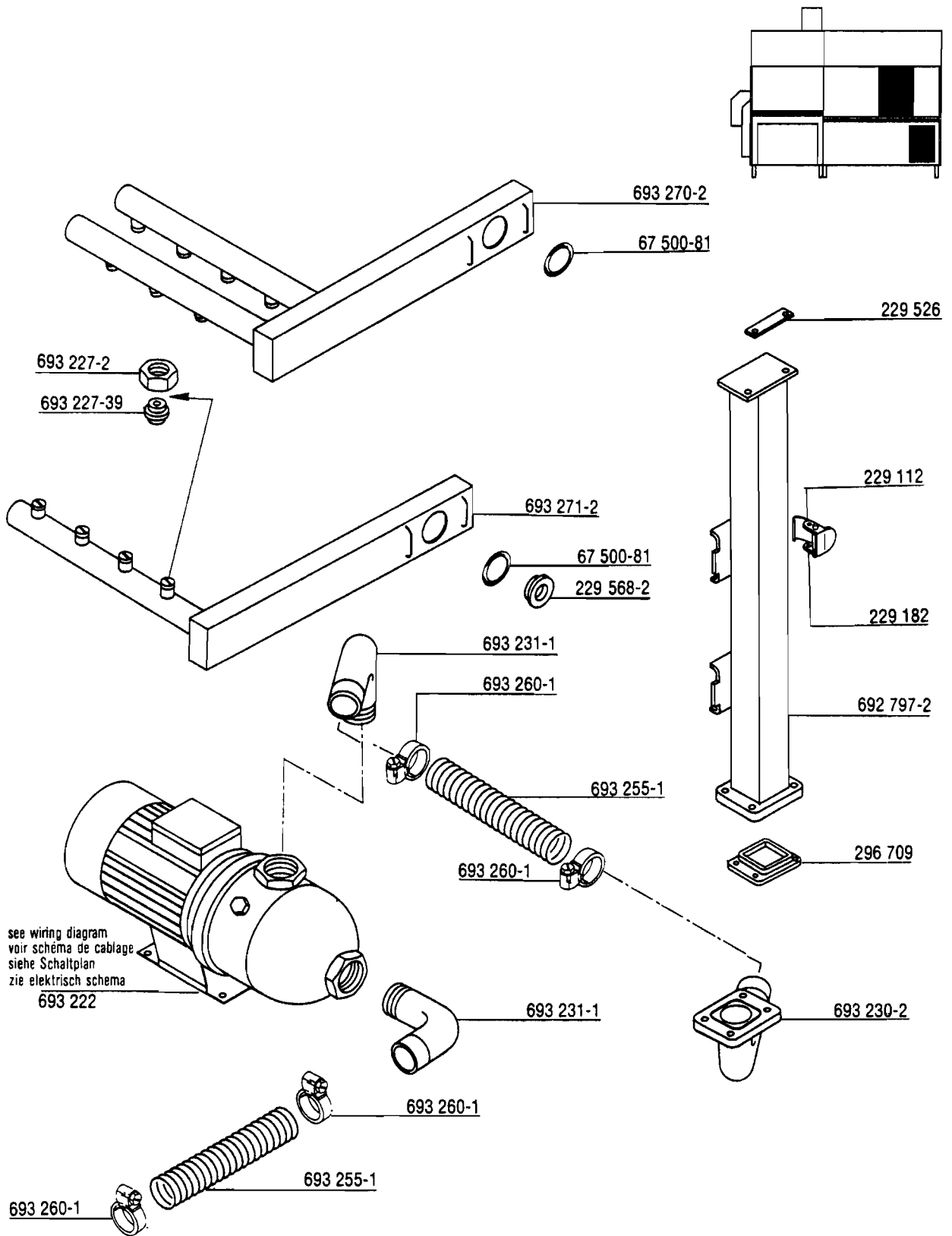


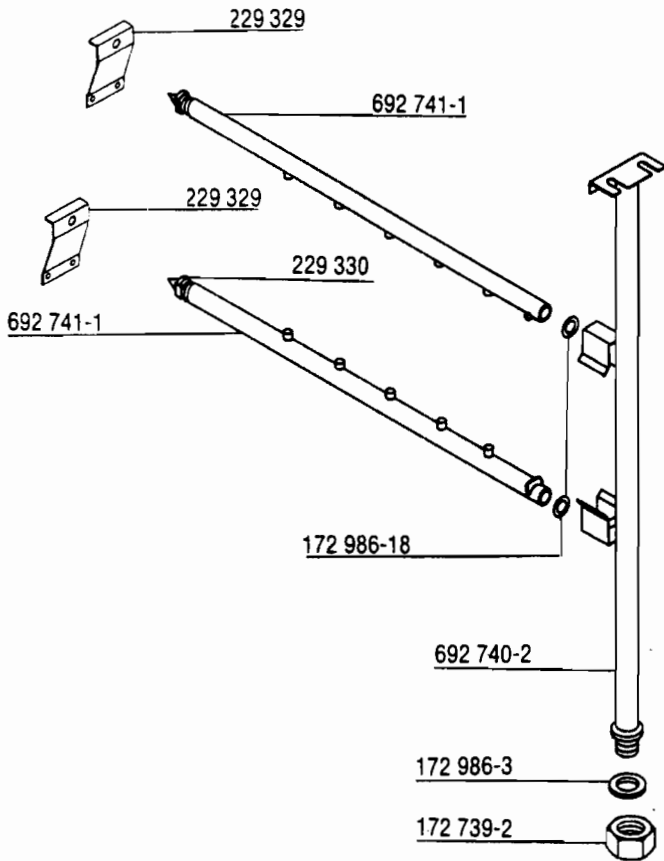
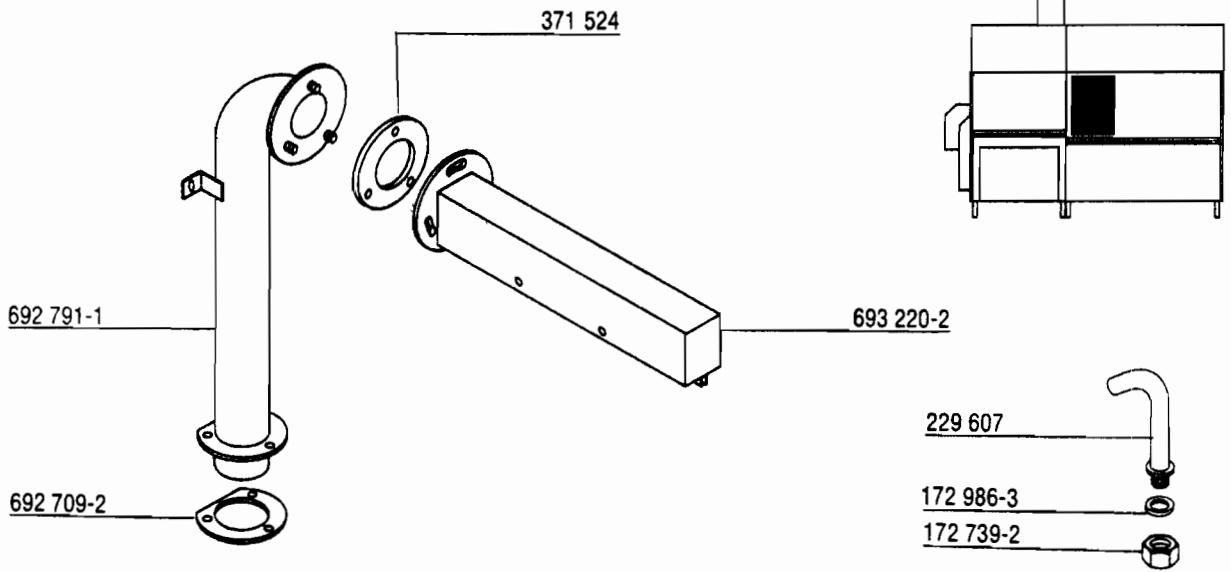


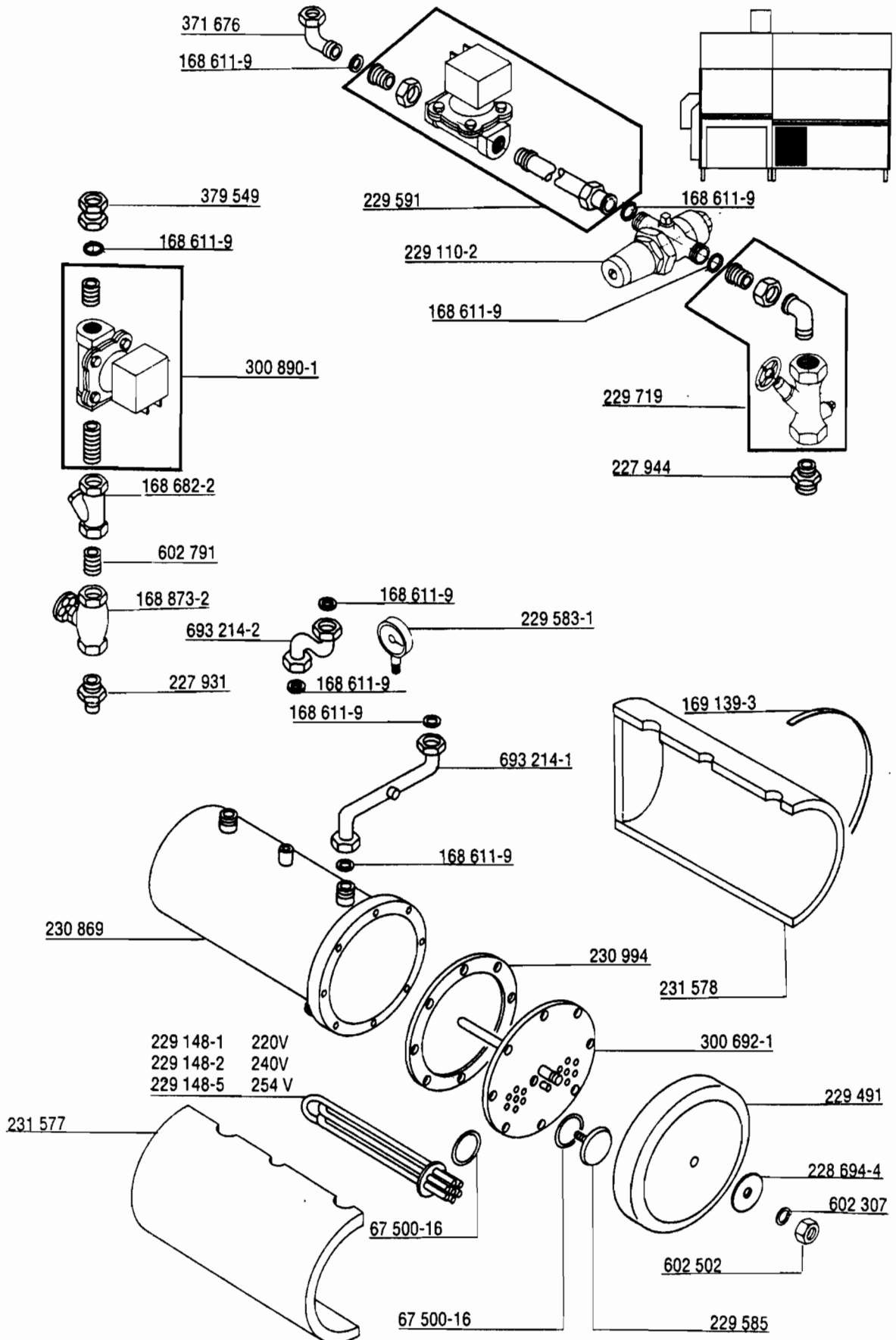


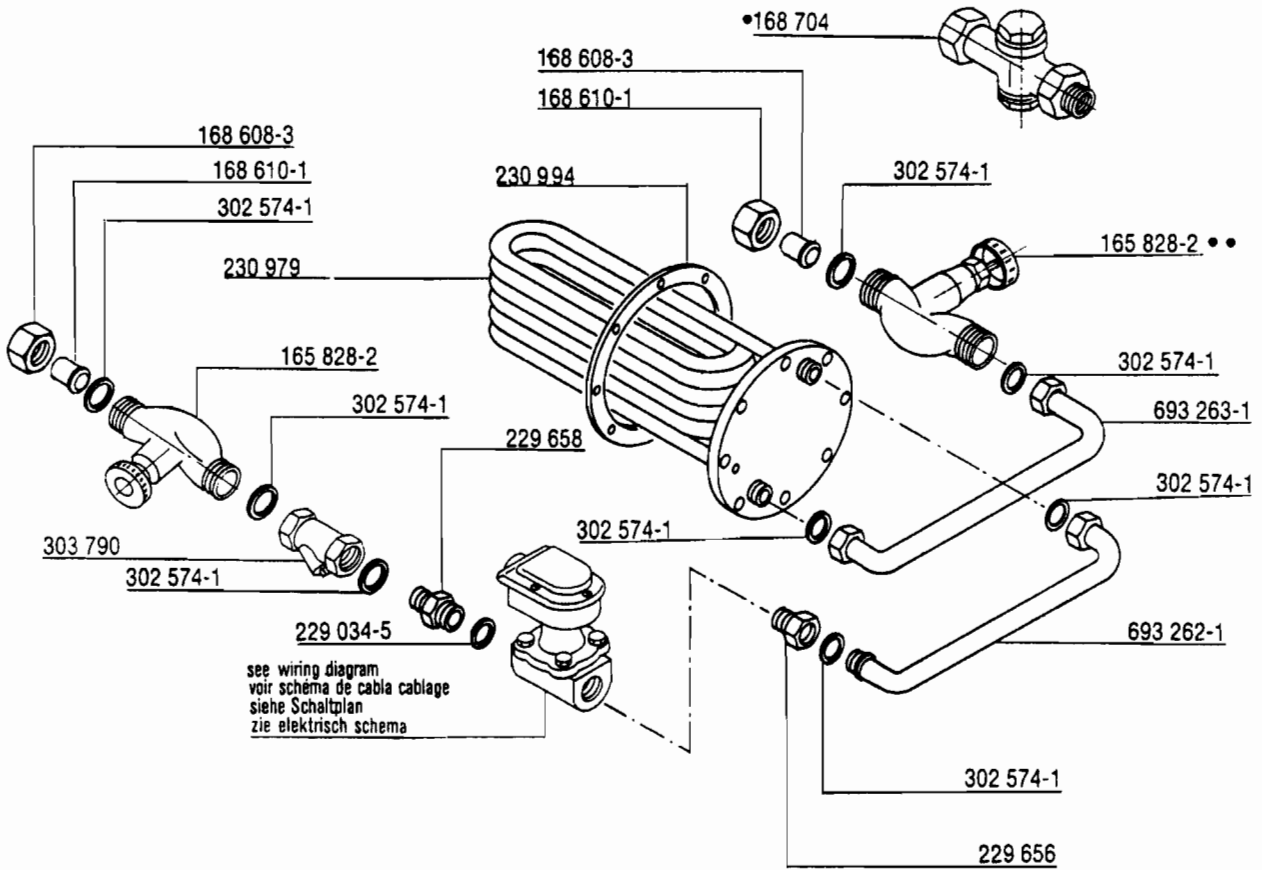
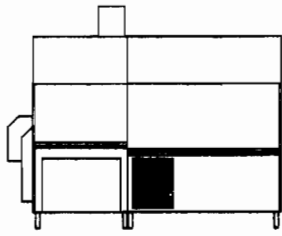




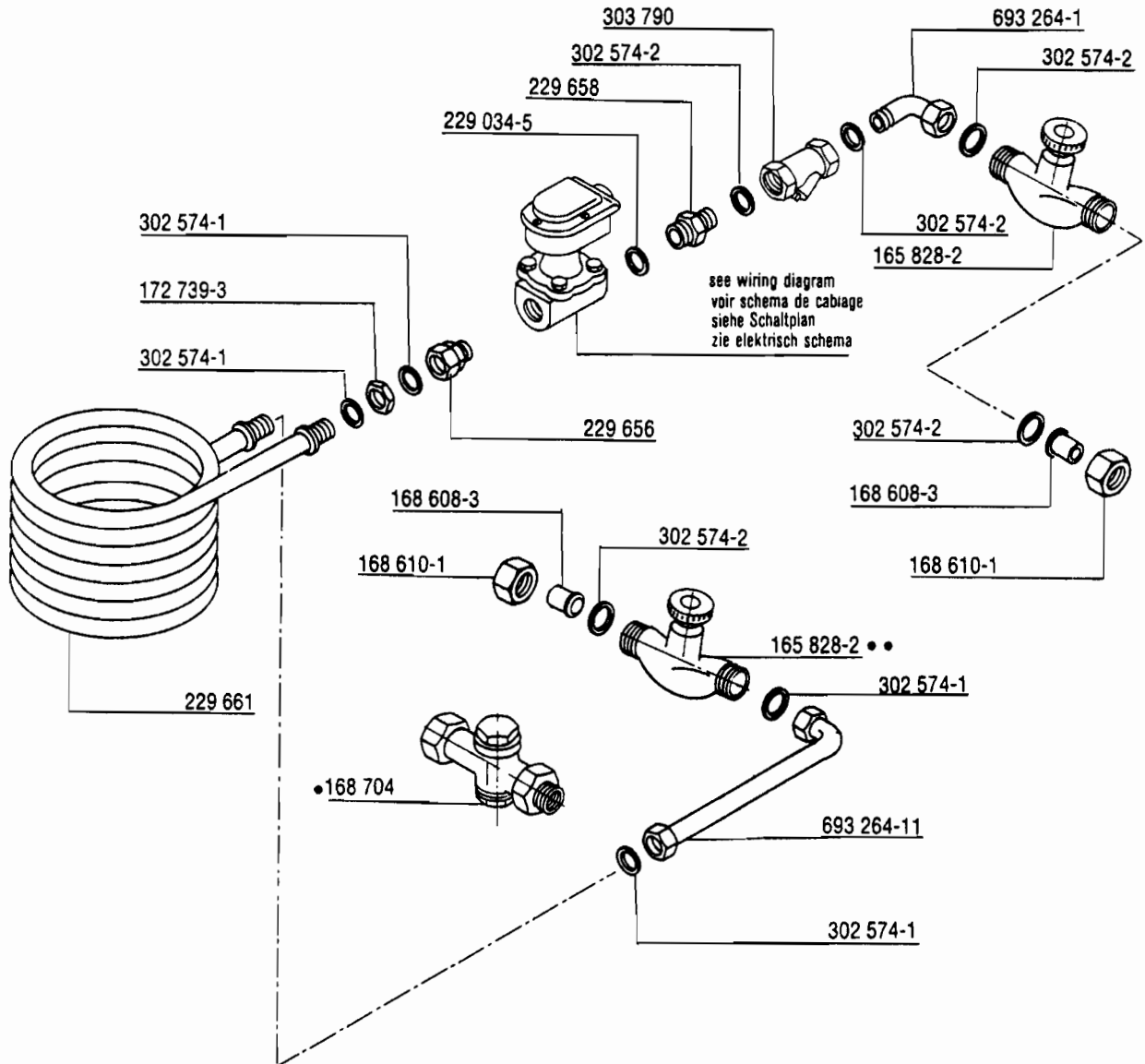
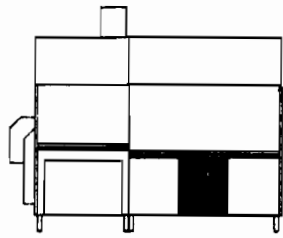




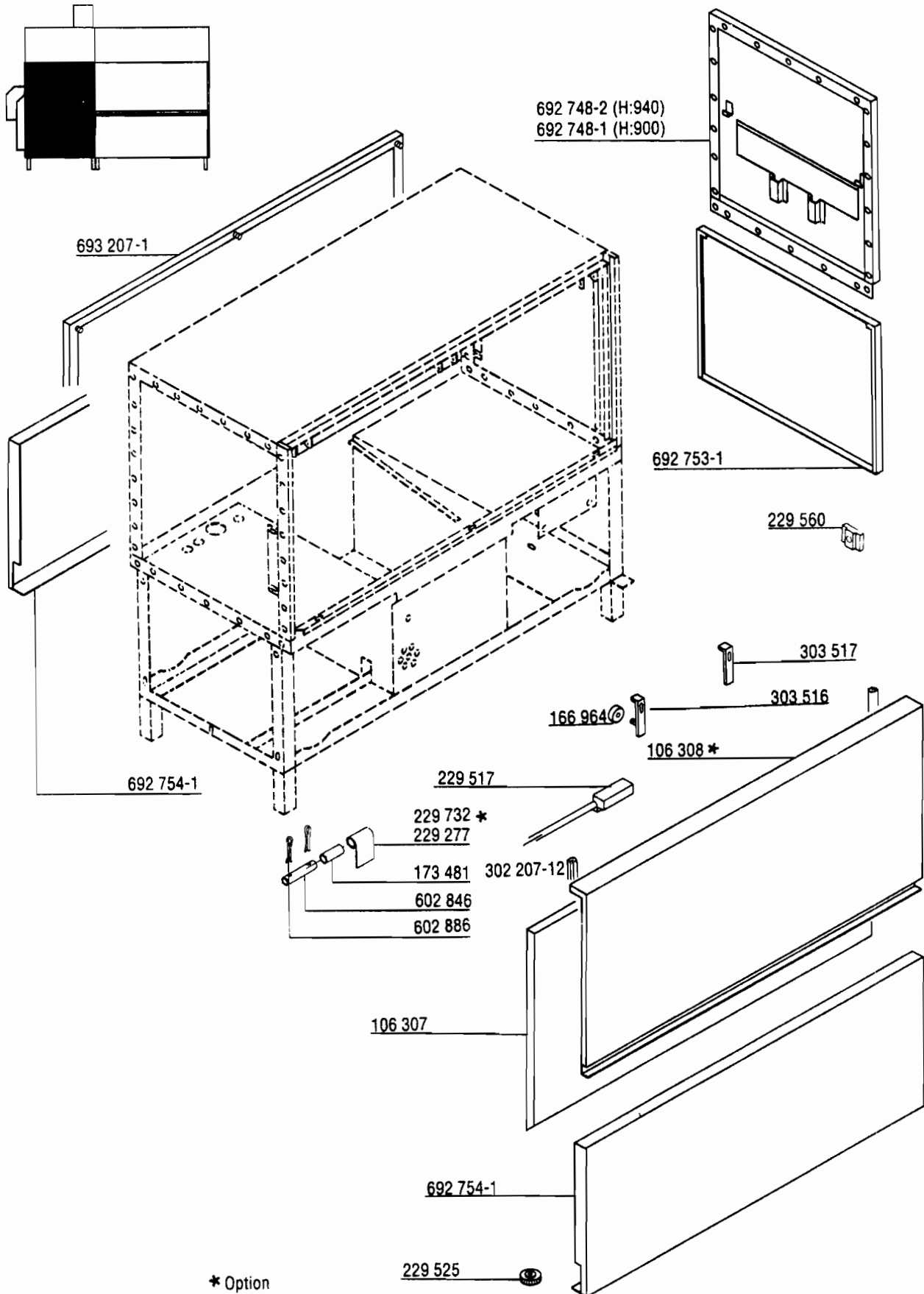




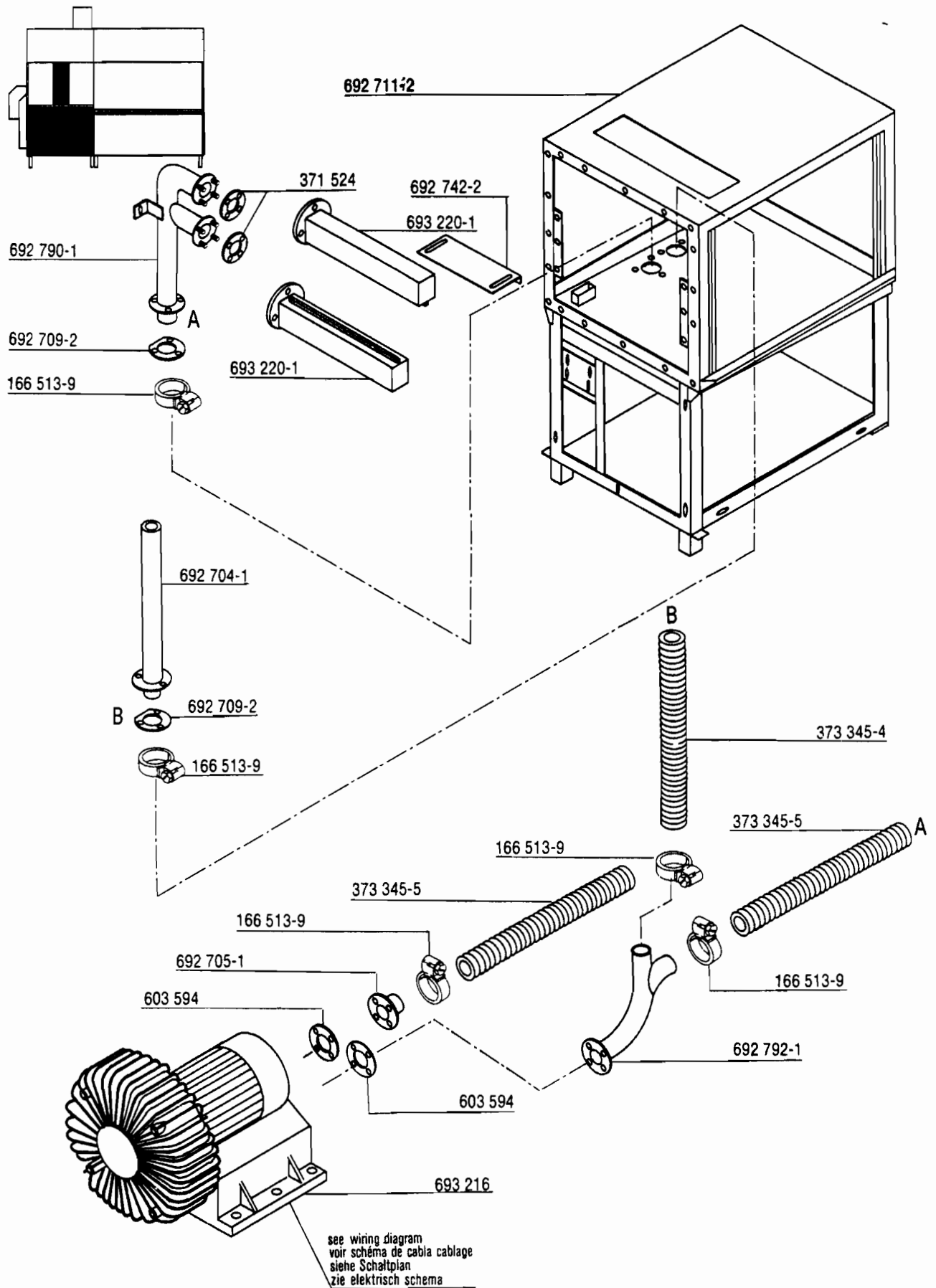
- | | |
|---------|--------------|
| • steam | •• hot water |
| vapeur | eau chaude |
| Dampf | Heißwasser |
| stoom | heet water |

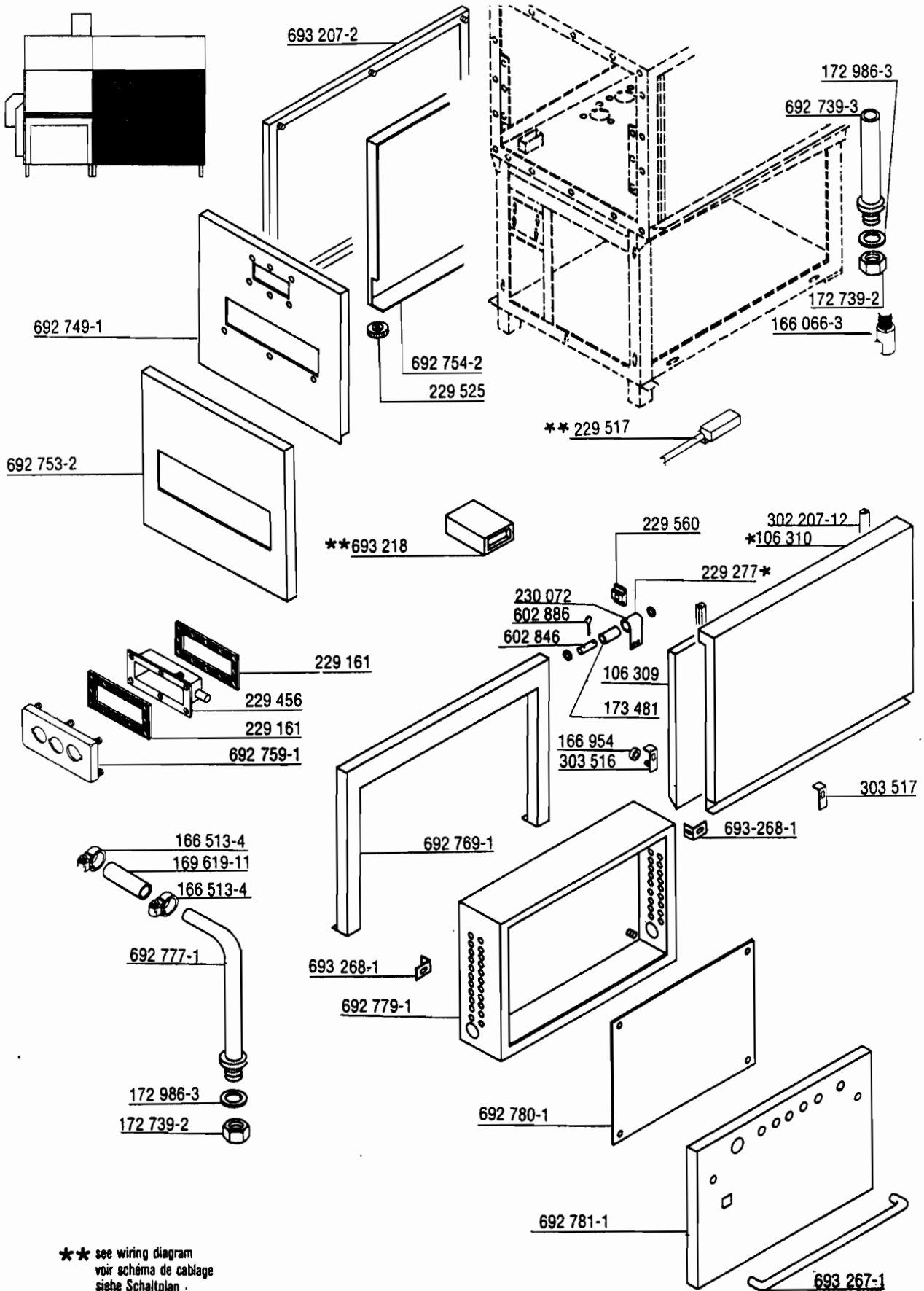


- | | |
|---------|--------------|
| ● steam | ●● hot water |
| vapeur | eau chaude |
| Dampf | Heißwasser |
| stoom | heet water |



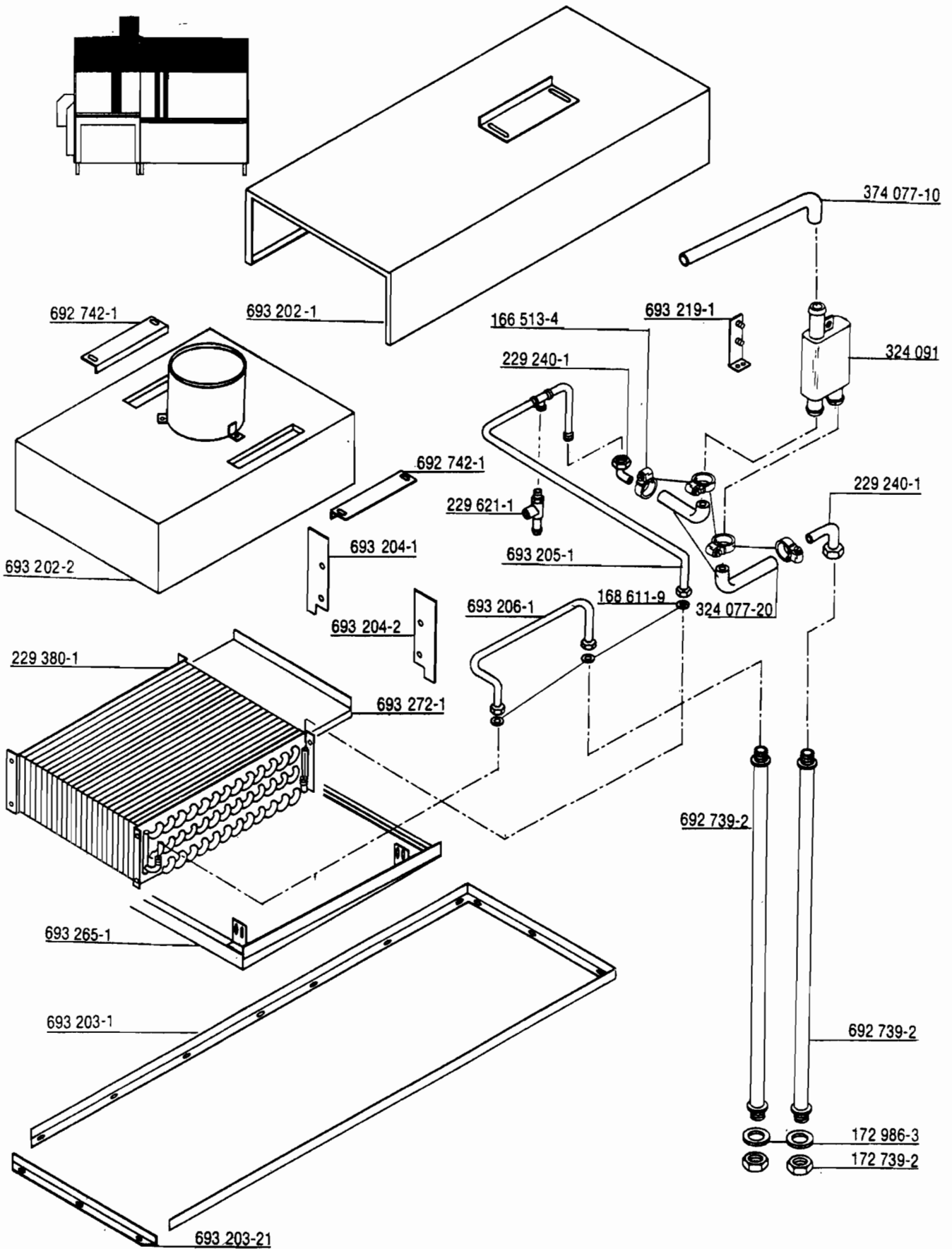
* Option

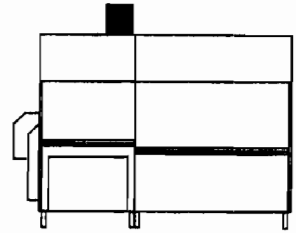




** see wiring diagram
voir schéma de cablage
siehe Schaltplan
zie elektrisch schema

*Option





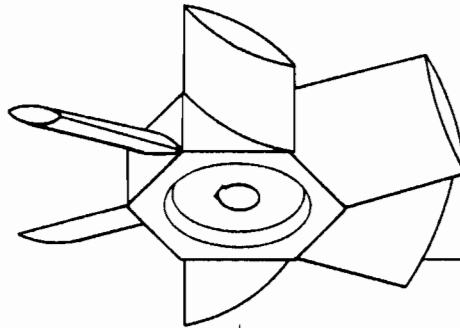
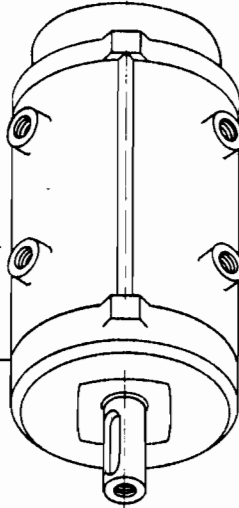
602 660-M6x16

602 286 \varnothing 6,4

693 877-1

see wiring diagram
voir schéma de cablage
siehe Schaltplan
zie elektrisch schema

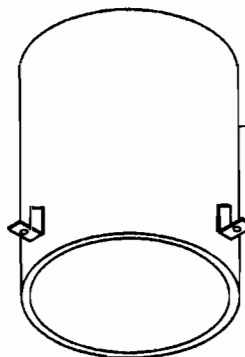
B 5x5x25



38 933-13

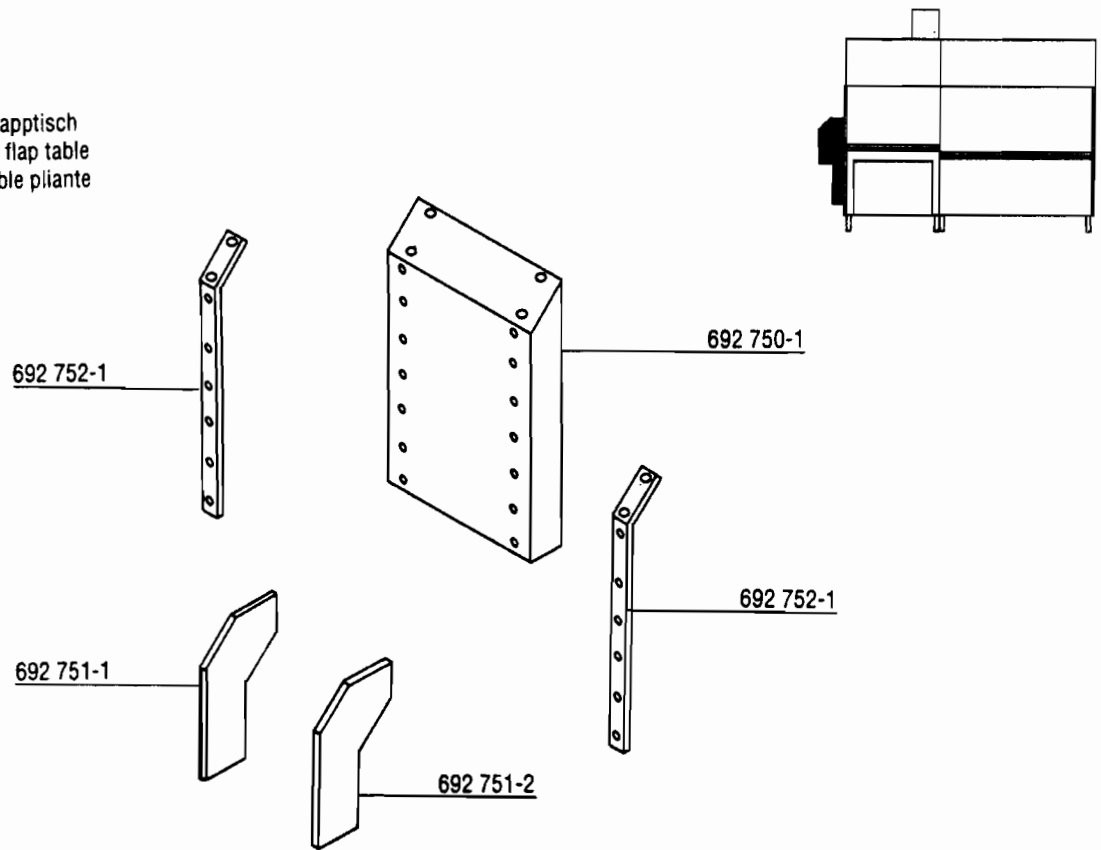
A6,4-602 286

602 570-M6x16



230 096

ohne Klapptisch
without flap table
sans table pliante



mit Klapptisch
with flap table
avec table pliante

